

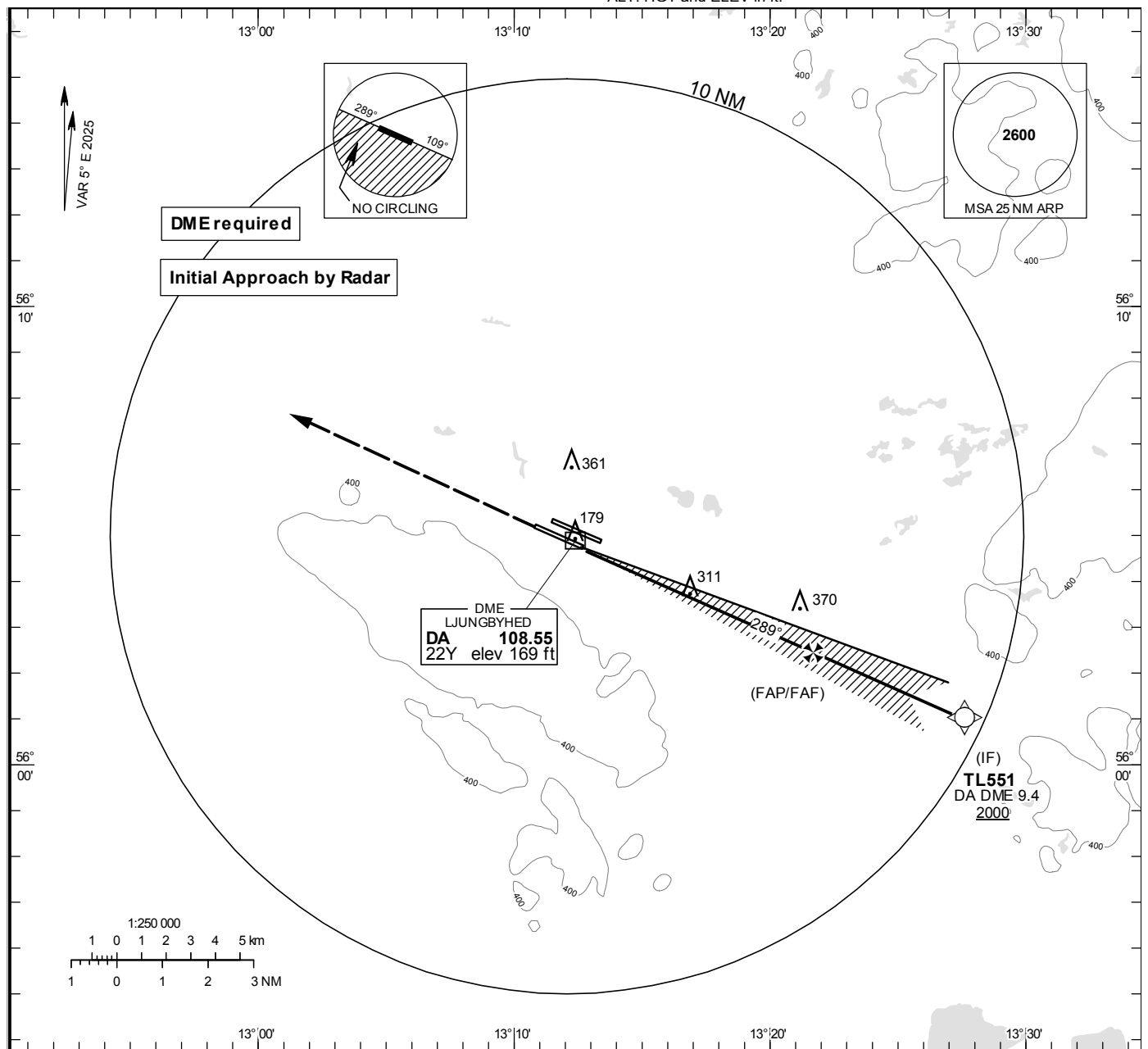
LJUNGBYHED

ILS y or LOC y RWY 29L
(Cat A/B)

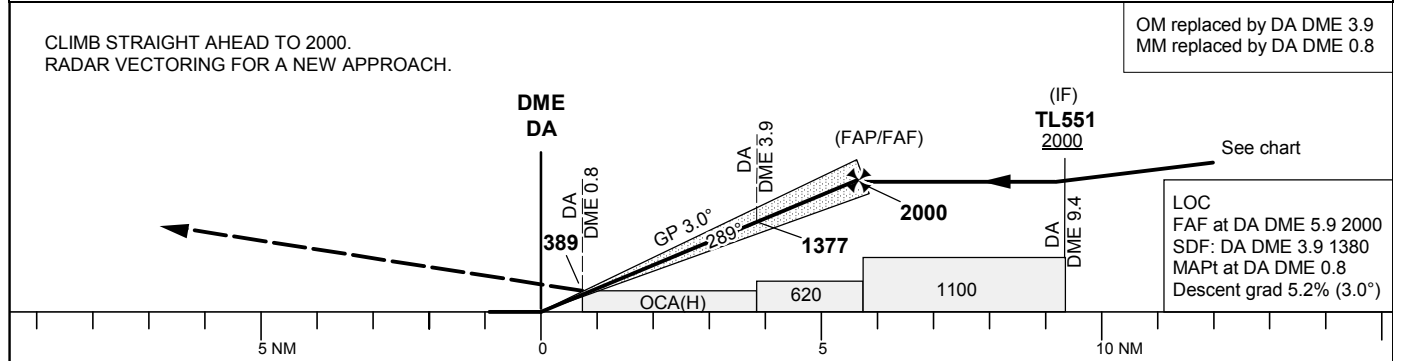
LJUNGBYHED TOWER 130.705
LJUNGBYHED GROUND 121.655
LJUNGBYHED APPROACH 129.555

THR ELEV 136.1 ft, AD ELEV 139 ft
OCH are related to THR.
Circling OCH are related to AD ELEV.
BRG are MAG
ALT, HGT and ELEV in ft.

INSTRUMENT
APPROACH
CHART – ICAO



TA 5000 ft AMSL RDH 50.9 ft *Timing not authorized for defining the MAPt



| Cat of ACFT | | OCA (H) | | Final approach | LOC Distance FAF-MAPt 5.1 NM* | | | |
|----------------------|-------|-----------|-----------|-----------------|-------------------------------|------|------|------|
| Straight-in Approach | CAT I | A | B | DME DA NM | 2 | 3 | 4 | 5 |
| | LOC | 281(144) | 290 (153) | ALT | 770 | 1090 | 1410 | 1730 |
| Circling NE RWY | LOC | 560 (430) | 660 (530) | GS | kt | 80 | 100 | 120 |
| | LOC | 660 (530) | 660 (530) | Time | min:s | 3:48 | 3:02 | 2:32 |
| | | | | Rate of descent | ft/min | 425 | 530 | 635 |

CHANGE: Editorial